

JFS

BEIJING JOINT FLOW SYSTEM CO.



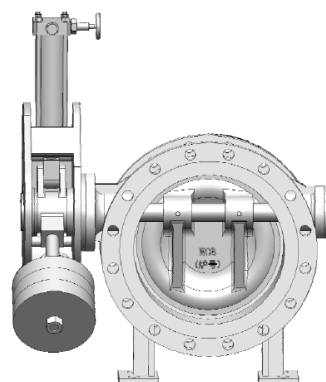
CHECK VALVE



BUTTERFLY TYPE CHECK VALVE

The Butterfly type Check Valve combines the advantages of the tight shut off butterfly valve with the non-slamming action of high end butterfly valves. Such design is a cost effective alternative to existing pump protection solutions such as traditional swing check valves and large complex cone type valve.

Smooth closure of the valve is ensured by using a counter weight. The valve can be supplied with hydraulic dash pot to prevent disc slamming and water hammer. It can also be used as combined shut-off and non-return valve on pump discharge lines.



FEATURE

- Non-slamming design
- Power failure to close
- Short closing time
- Controlled closing time in order to avoid water hammer
- Automatic quick closure first and then slow closure. Quick closure with resistance-free and slow closure without water hammer provides excellent system safety and reliability
- Inline adjustable seat
- Inline maintenance
- Corrosion resistant inner parts ensure long term service under adverse condition



STANDARD

Design and Manufacture	API 594/BS 5163
Pressure Test	API 598/AWWA C504/ISO 5208
Face to Face Dimension	API 609/AWWA C504/ISO 5752
Flange Dimension	ASME B16.5/ASME B16.47/AWWA C207/ISO 7005

*More standard specifications are available on request.

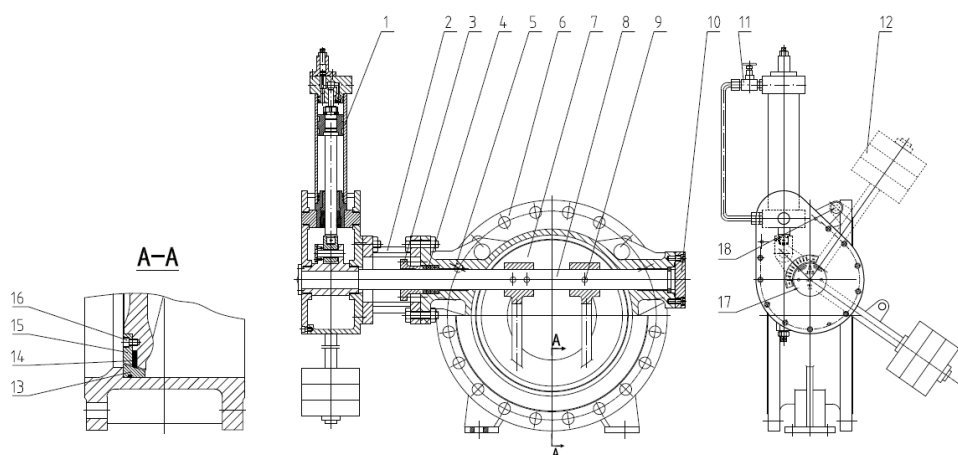
BUTTERFLY TYPE CHECK VALVE

TEST DATA

Nominal Pressure PN (MPa)	1.0	1.6	2.5	4.0	150lb	300lb	600lb
Hydraulic Shell Test Pressure (MPa)	1.5	2.4	3.75	6.0	3.0	7.5	16.5
Hydraulic Seal Test Pressure (MPa)	1.1	1.76	2.75	4.4	2.2	5.5	11.1
Temperature (°C)	-10~300(DI)				-29~425(CS)		

*More test specifications are available on request.

PARTS LIST AND MATERIAL

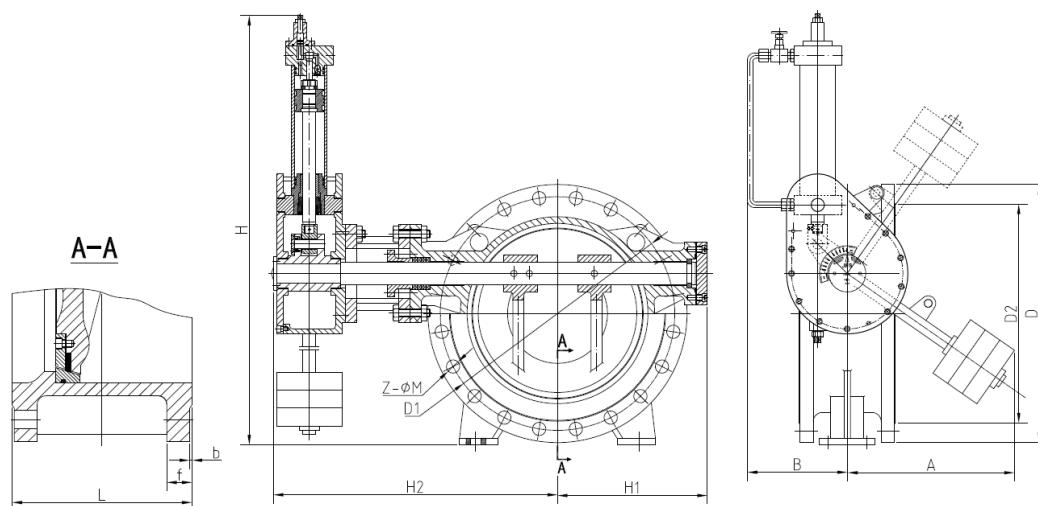


No	Parts Name	Material
1	Cylinder	Carbon Steel
2	Yoke	Carbon Steel
3	Packing Gland	Carbon Steel
4	Packing	NBR/EPDM/PTFE/VITON/Graphite
5	Bear Bushing	Copper/Bronze/ Stainless Steel
6	Body	Ductile Iron/Carbon Steel/Stainless Steel
7	Disc	Ductile Iron/Carbon Steel/Stainless Steel
8	Shaft	Stainless Steel
9	Shaft Pin	Stainless Steel
10	End Cap	Carbon Steel/Stainless Steel
11	Throttle Valve	Carbon Steel
12	Counter Weight	Carbon Steel
13	Body Seat Ring	Stainless Steel/Copper Alloy
14	Disc Sealing Ring	Laminated Seal Ring/Copper Alloy/NBR/EPDM/VITON
15	Retaining Ring	Stainless Steel
16	Screw	Carbon Steel
17	Position Indicator	Stainless Steel
18	Locking Device (optional)	Carbon Steel

*More material specifications are available on request.

BUTTERFLY TYPE CHECK VALVE

DIMENSION



DN	L		$H_1 \approx$	$H_2 \approx$	$H \approx$	$A \approx$	$B \approx$	Est. Weight (kg)
	Short body	Long body						
200	152	230	211	438	781	200	320	140
250	165	250	240	480	781	200	320	165
300	178	270	277	511	847	211	324	180
350	190	290	300	575	875	211	324	190
400	216	310	330	650	1100	236	420	219
450	222	330	350	675	1135	236	420	276
500	229	350	370	700	1172	236	420	368
600	267	390	475	835	1340	263	467	532
700	292	430	510	880	1403	263	467	956
800	318	470	570	935	1490	263	467	1240
900	330	510	615	1005	1644	295	607	1530
1000	410	550	660	1070	1700	295	607	2104
1200	470	630	770	1180	1820	295	607	2890
1400	530	710	940	1380	1980	330	720	3356
1600	600	790	1080	1520	2140	330	720	4400

*Flange dimensions (D, D₁, D₂, Z-M, b, f) refer to Catalogue of Accessory: Series 8 – Flange.

*More dimension specifications are available on request.